

Eugene James  
Roy Reader  
5-4-13

1967  
*EAGLE*  
Presented by  
the  
Senior Class  
of  
Belvoir-Falkland High School

*Learning*

*Requires . . .*



"work outside of classes"

"would you believe, studying?"



"studying requires

deep thought"



"wishful thinking"



"all this leads up to graduation"

*As Our School Years Pass,  
We Will Remember:*



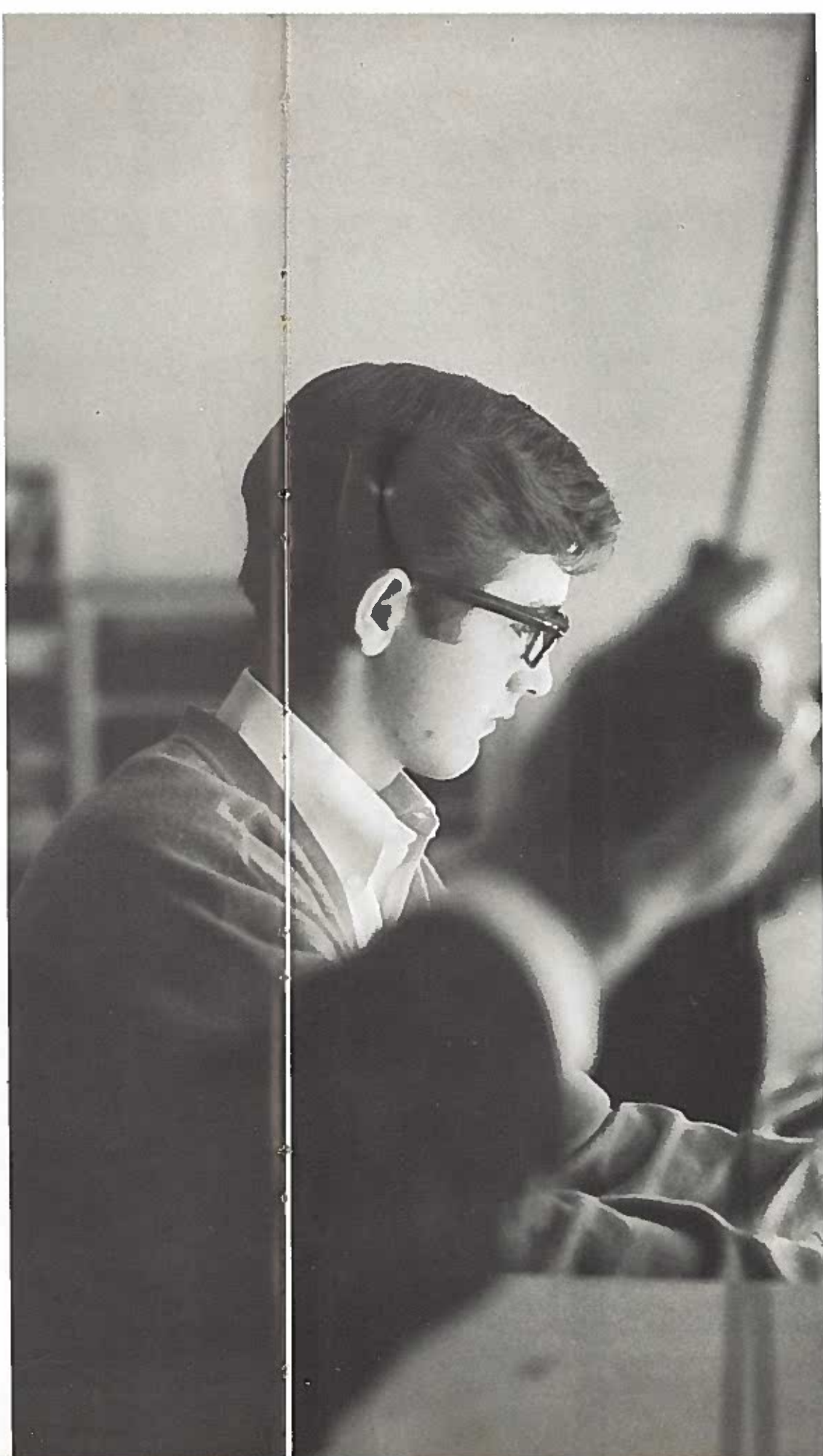
"Chow Time"



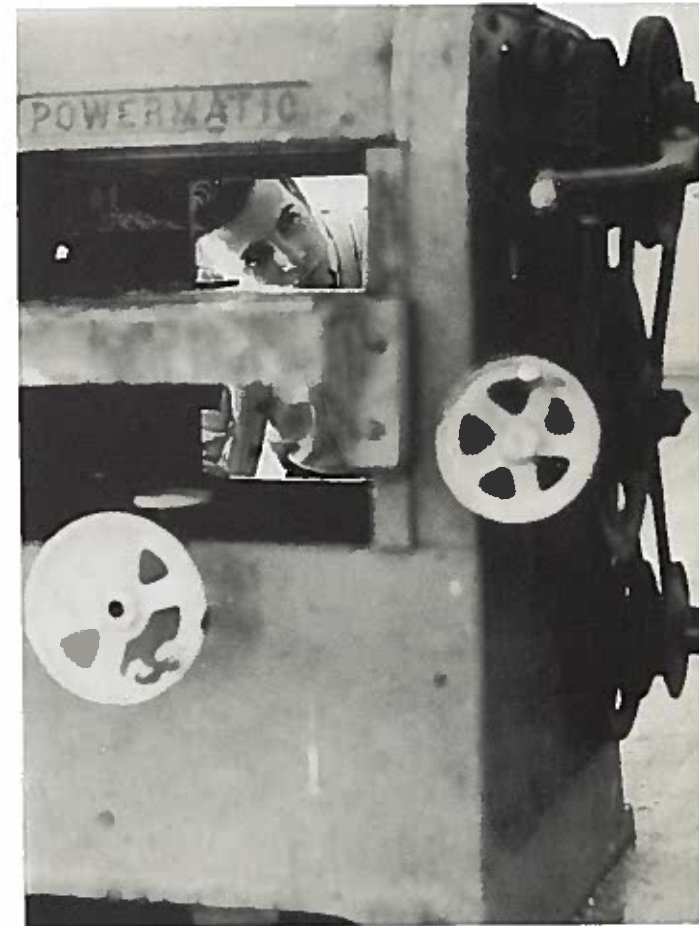
"The Missing Link"



"How CLEAN It is!"



"Learning To Operate The . . . ?"



"Time Out"

"Teachers Have Pets"

*School Consists of . . .*



"classes"



"ice cream"



"they're sophomores!"



"fun"



"hurrying to class"

"groups"

## *In Memoriam*



To many of the students in our class Bobby Allen was not known but the ones that knew him will agree that he was an outstanding classmate. Bobby had a great personality and was always friendly to all of his classmates. In the younger years of his life he was very talented in all fields of sports and worked very hard in all of his subjects. Bobby passed away at the age of fourteen and we shall cherish his memory forever.



J. E. Warren was fatally injured last May in a Honda mishap; therefore the 1967 Eagle Staff has deemed it appropriate to dedicate this page as a memorial to him.

J. E., a seventeen year old junior was an outstanding classmate during his three years in high school. He always had a cheerful word for everyone and his contributions to his school will be greatly remembered throughout the years to come.



As we approach the final stage of our high school years, we stop and diligently search through these past four years and consider the successes and failures that we have encountered. For these things we find one outstanding person that has contributed to our success in high school. She has worked with us in times of our greatest need and has given us her fullest of understanding; therefore we the Seniors of 1967 would like to acknowledge the help, guidance and ceaseless devotion that we have been shown, and so we dedicate this, our 1967 Eagle to Mrs. Faye Bullock.

## FACULTY



## Administration and Faculty

Another hurdle in life has been overcome. I hope you will continue to meet the challenges of life with the interest, desire and determination you have shown while at Belvoir-Falkland.

The world is changing and becoming more complex every day making the need for advanced education more important than ever. You have prepared for yourself a basic foundation upon which you can build your life to meet our uncertain future.



Mr. James Carraway



Mrs. Sandra Mewborn



Mrs. Norma Peyton



Mr. Horace Lawrence



Mr. Eugene James



Mrs. Judy Roberson



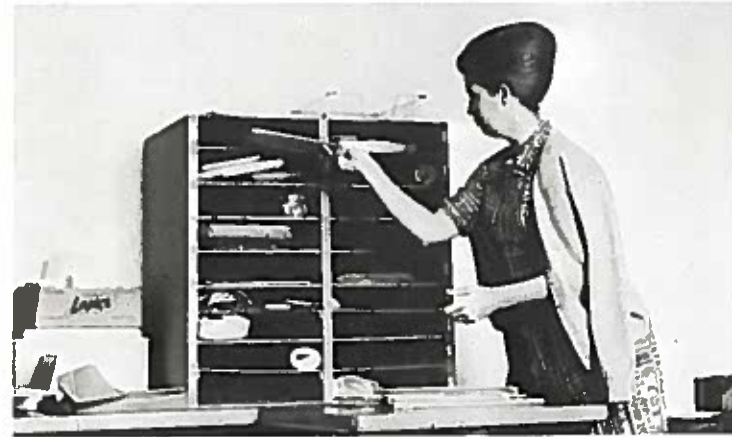
Mrs. Lucille Mayo



Mrs. Barbara Parker



Mr. J. T. Cobb



Mrs. Faye Bullock



Mrs. Linda Cox



Mr. Vernon Davis

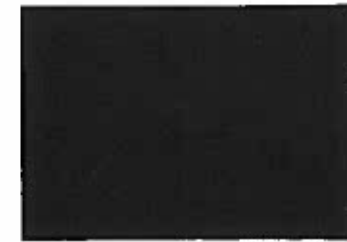


Mrs. Minnie Saieed



Mrs. Ann Peadar

## CLASSES







President--William Harris  
 Vice-President--John Price  
 Secretary--Marlene Sutton  
 Treasurer--Larry Deans  
 Reporter--Ginger Lewis



Connie Faye Bell  
 Glee Club 1, 2; Bible Club 1,  
 4; F. H. A. 4

"Genius at work."



Sylvia Faye Casey  
 F. H. A. 1; F. F. A. 3; Glee  
 Club 1, 2, 3; Bible Club 1;  
 Paper Staff 3, 4



Eva Elizabeth Casper  
 F. H. A. 1, 2, 3, 4; Glee Club  
 1, 4; Bible Club 4; Monogram  
 Club 3, 4; Cheerleader 3; Bas-  
 ketball 4; F. T. A. 4



Patricia Ann Cates  
 F. H. A. 1; F. F. A. 3, 4; Paper  
 Staff 3, 4; Bible Club 1, 2;  
 Glee Club 1, 2, 3; Library Club  
 2



Ellen Baker Coburn  
F. H. A. 1, 2, 3, 4; F. T. A. 2, 3, 4; Beta Club 1, 2, 3, 4; Glee Club 1, 2, 3; Monogram Club 2, 3, 4; Paper Staff 2, 3, 4; Religious Editor 2; Cheerleader 2; Treas. 2; Marshal 3



Brenda Kay Garris  
Bible Club 1, 3, 4; Glee Club 2, 3, 4



Robert Louis Gaynor  
F. F. A. 1, 2, 3, 4; Baseball 1, 2, 3, 4; Basketball 1, 2, 3, 4; Monogram 2, 3, 4



Maggie Frances Harrell  
Glee Club 1, 2; F. F. A. 3; F. H. A. 4; Bible Club 1, 4



Charlotte Deans  
Bible Club 1, 2; Glee Club F. H. A. 2, 3; F. T. A. 2; Library Club 2, 3; Basketball 1; Class Officer 1, 2, 3



Larry Ray Deans  
F. F. A. 1, 2, 3, 4; Bus Driver 3, 4; Bible Club 1, 2; Basketball 1, 2; Glee Club 1, 2, 3; Class Officer 4



Norma Stokes Foskey  
F. H. A. F. T. A. 1 Historian; 2, 3; Asst. Program Chairman 4; Library 1, Historian 3; Vice President; Beta Club 2, 3; Sec.; Glee Club 2, 3; Paper Staff; Editor-S. C. A. Bible Club 2, 3, 4; Cheerleader



Brenda Joyce Harris  
F. H. A. 1, 2, 3, 4; Vice Pres. 3; Pres. 4; Bible Club 1, 2, 3, 4; Program Chairman 3; Asst. Chair. 2; Pres. 4; Library Club 3; S. C. A. 2, 3, Vice Pres. 3; F. T. A. 2, 3; Homecoming 2, 3; Runner-up 3; Class Officer 1, 2, 3, 4; Mar. 3





**Peggy Lou Harris**  
F. H. A. 1; F. T. A. 2, 3, 4;  
Bible Club 1, 2, 3, 4; Paper  
Staff 4



**William Benjamin Harris**  
Basketball 1, 2, 3, 4; Monogram  
Club 1, 2, 3; S. C. A. 3; F. T. A.  
2, 3, 4; F. F. A. 1, 2, 3, 4; Bus  
Driver 4; Class Officer 1, 4;  
Homecoming Escort 1, 2, 3, 4



**Wesley Arnold Hawkins**  
F. F. A. 1, 2, 3, 4; Bus Driver 3



**Dennis Ray Jones**  
Library 1, 2, 3, 4; Vice Presi-  
dent 4; F. F. A. 1, 2, 3, 4; Bible  
Club 1, 2, 3, 4; Glee Club 2, 3;  
S. C. A. 4; Paper Staff 3, 4;  
Class Officer 2, 4



**Carol Diane Lewis**  
F. H. A. 1, 2, 3, 4; Bible Club 1,  
2, 3, 4; Library Club 1, 3, 4; Re-  
porter 3, President 4; Basketball  
1; Homecoming Court 1, 4;  
F. T. A. 2, 3, 4; Program Chair-  
man 4; Paper Staff; Class Offi-  
cer 1, 2, 3, 4



**Ginger Ann Lewis**  
Bible Club 2; Library Club 1;  
Homecoming Court 4; Glee  
Club 1, 2, 3; F. T. A. 2, 3, 4;  
Reporter 2, Program Chair. 3;  
F. H. A. 2, 3; County Vice  
President 4; S. C. A. 1, Beta  
Club 2, 3, 4; Pres. 4; Bus Driver  
4; Paper Staff 4; Class Off. 2,  
3, 4; Chief Marshal 3



**Micheal Eugene Higson**  
Bus Driver 3, 4; F. F. A. 1, 2,  
3, 4; Vice Pres. 4; Reporter 2;  
Sen. 3; F. T. A. 2, 3, 4; Bas-  
ketball 1, 2; Monogram 2;  
Homecoming Escort 3, 4



**Ethel Mae Hulon**  
Glee Club 1, 2; F. H. A. 1, 2, 4;  
Bible Club 1; F. F. A. 3, 4



**CHARLES HERBERT MEEKS**  
F. F. A. 1, 2, 3, 4; S. C. A. 1, 4;  
**PRESIDENT 4; MONOGRAM**  
**CLUB 2, 3, 4; V. P. 4; BIBLE**  
**CLUB 1; BASKETBALL 1, 2, 3,**  
**4; BUS DRIVER 4; F. T. A. 2,**  
**3, 4; HOMECOMING ESCORT 4.**



**Jerry Bradford Little**  
F. F. A. 1, 2, 3, 4; T & I 4;  
Homecoming Escort 1, 2, 3, 4



Jean Carolyn Moore  
F. H. A. 1, 2, 3, 4; Bible Club  
1, 2; Cheerleader 1; S. C. A. 2;  
F. T. A. 2, 3, 4 President 3;  
Glee Club 2, 3 Pres. 3; Library  
Club 3; Paper Staff 4; Class  
Officer 1, 2; Annual Staff Pho-  
tographer 4; F. F. A. 4; Home-  
coming Court 2, 4



Gerald Rogers Moore  
F. F. A. 1, 2, 3; T & I 4



Virginia Carol Moore  
F. H. A. 1, 2, 3, 4; Bible Club 1,  
2, 4; Library Club 3, 4; Glee  
Club 2, 3, 4; Paper Staff 2, 4;  
Class Officer 2



Garland Ray Parnell  
F. F. A. 1, 2, 3, 4 Pres. 4;  
Monogram Club 2, 3, 4; Pres.  
4; Bus Driver 3, 4; Paper Staff  
3, 4; Class Officers 3; Baseball  
2, 3, 4; Basketball 2, 3, 4;  
Homecoming Escort 3, 4



Tanya Ann Murray  
F. H. A. 1; F. T. A. 4; Beta  
Club 4; S. C. A. 4; Annual  
Staff 4; Paper Staff 4; Marshal  
3



Beverly Daune Pierce  
F. H. A. 1, 2, 3, 4; Glee Club 1,  
2; F. T. A. 2, 3, 4 Treasurer;  
Bible Club 2, 3; S. C. A. 1, 2, 3,  
Secretary 2; Basketball 1, 2, 4;  
Co-Captain 4; Paper Staff 4,  
Ass. Editor 4; Annual Staff 4,  
Co-Editor; Class Officer 2, 3, 4;  
Beta Club 2, 3, 4; Marshal 3;  
Homecoming Court 2, 3, 4



William (Buzzy) Pierce



John Irven Price, Jr.  
Student Council 1, 2; Library  
Club 2, 3; Bible Club 1, 2, 3, 4,  
Program Chairman 4; Class  
Officers 1, 2, 3, 4; F. F. A. 1, 2,  
3, 4; Editor of the Annual 4;  
F. T. A. 2, 3; Homecoming  
Escort 2, 4



William Bennett Price  
F. F. A. 1, 2, 3, 4; F. T. A. 2, 3, 4; Treas. 3; Beta Club 2, 3; Basketball 1, 2, 3; S. C. A. 2, 4, Treas. 4; Bible Club 1, 2; Glee Club 2, 3; Monogram Club 2, 3, 4; Bus Driver 4; Paper Staff 3, 4



Elbert Ray Pollard  
F. F. A. 1, 2, 3, 4; Monogram Club 3, 4



Jessie Juanita Simpkins  
Monogram Club 2, 3, 4; Bible Club 1, 2, 3, 4; Paper Staff 3, 4; F. T. A. 2, 3, 4; Library Club 4; F. H. A. 1, 4; Glee Club 1, 3, 4; S. C. A. 4; Class Officer 1; Homecoming Court 3, 4; Cheerleader 2



Sandra Marlene Sutton  
Bible Club 1, 2, 3, 4; F. H. A. 1; F. T. A. 2, 3, 4; Annual Typist 4; Paper Staff 4; Secretary 4; Annual Staff 4; Treasurer 1; Marshal 3



James Leroy Tingen  
F. F. A. 1, 2, 3, 4; F. T. A. 3, 4 President 4; Basketball 2, 3, 4; Glee Club 1, 2, 3; Bible Club 1, 2, 3; Paper Staff 3; Marshal 3; S. C. A. 2, 3, 4; Beta Club 4; Annual Staff 4; Bus. Manager



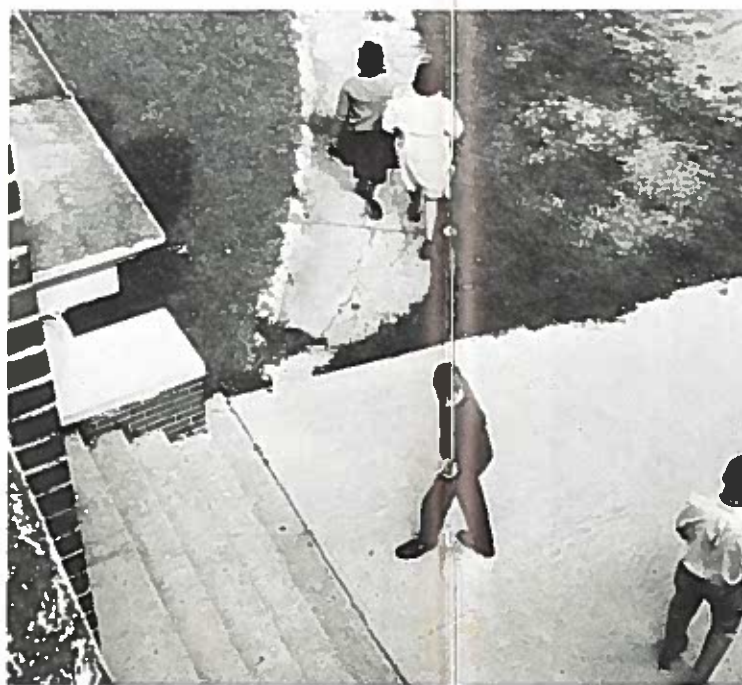
Lester Eugene Turner  
F. F. A. 1, 2, 3, 4; Bible Club 1, 2, 3, 4; Library Club 2, 3, 4; Paper Staff 3



Thomas Alonzo Sprouse  
F. F. A. 1, 2, 3, 4; Bible Club 1, 2, 3, 4; F. T. A. 3, 4; Library Club 4



Jimmy Lee Suggs  
Typing I County Contest; Library Club 3, 4



Brenda Ruth Tyson  
F. F. A. 2; Library Club 1; F. T. A. 1; Paper Staff 1; F. H. A. Glee Club 1; Class Officer 4



Lester Earl Wilkinson  
F. F. A. 1, 2, 3, 4; Basketball

## Who's Who?

Who's Who are students chosen from the senior class by the faculty. These students are outstanding in the fields of athletics, character, art and leadership, scholastic ability, dependability, and friendliness. They are also graded on their conduct and attitude to their classmates and to their school. All of these students were very fine selections and the annual staff would like to congratulate them on the fine work that they have put forth this year.



Ginger Lewis



William Harris



Brenda Harris



John Price



Carol Lewis



Beverly Pierce



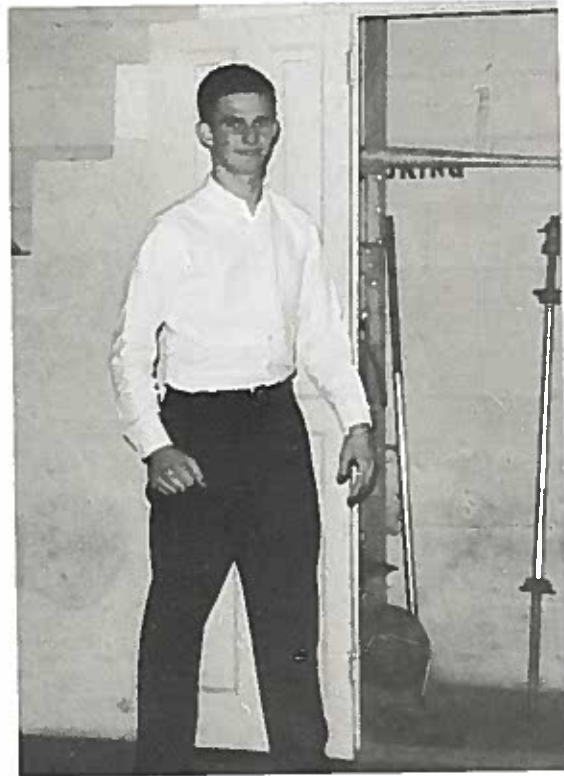
Tanya Murray

## Who's Who?

Who's Who are students chosen from the senior class by the faculty. These students are outstanding in the fields of athletics, character, art and leadership, scholastic ability, dependability, and friendliness. They are also graded on their conduct and attitude to their classmates and to their school. All of these students were very fine selections and the annual staff would like to congratulate them on the fine work that they have put forth this year.



Ginger Lewis



William Harris



Brenda Harris



John Price



Carol Lewis



Beverly Pierce



Tanya Murray



## Juniors

Pres. -- Kelly Witherington  
 V. P. -- James Bland  
 Sec. -- Peggy Leggett  
 Treas. -- Barbara Stokes

Darnell Allen  
 LeLand Baker



Ricky Beaman  
 James Bland  
 Roy Brown  
 Larry Buck

Geraldine Casper  
 Francis Cates  
 Minnie Cates  
 James Cogdell



Frankie Corbitt  
 James Corbitt

Glenda Davis  
 Diane Everett



Charles Harris  
 Dewey Keel  
 Jimmy Langley  
 Nancy Langley

Peggy Leggett  
 Bucky Moore  
 Jean Morris  
 Vivian Phillips



Brenda Powell  
 Allan Ricks  
 Wayne Smith  
 Eleanor Stancil

Barbara Stokes  
 Raymond Stokes  
 Phyllis Summerlin  
 Moses Teel



Gloria Tillery  
 Kelly Witherington





## Sophomores

Pres. --David Nichols  
 V. P. --Charles Whitley  
 Sec. --Lois Everette  
 Treas. --Gordon Bunting  
 Reporter--Judy Scott



Pamela Allen  
 Patsy Allen



Kenneth Bright  
 Sue Bullock  
 Gordon Bunting  
 Thomas Burrows  
 Peggy Casey



Johnnie Cates  
 E. G. Clark  
 Pamela Collins  
 Kirby Cox  
 Ernest Dunn



Eddie Everett  
 Lois Everette  
 Billy Forbes  
 Diana Garrett  
 Lyman Garris



Connie Hamill  
 Teresa Harrell  
 Edith Harris  
 Jackie Harris  
 James Harris

Thomas Harris  
 Lois James  
 Della Jordon  
 George Langley  
 Frances Langley



Sandra Letchworth  
 Cathy Manning  
 David Mayo  
 David Nichols  
 Vivian Owens



Edward Pass  
 Gloria Peaden  
 Jimmy Peaden  
 Linda Peaden  
 Portia Peaden



Gary Pollard  
 Jo Ann Pollard  
 Larry Pollard  
 William Proctor  
 Judy Scott



Brenda Smith  
 Russell Spain  
 Jean Sprouse  
 Deloris Stancil  
 James Stancil



Ronald Stokes  
 Buddy Teel  
 Harry Teel  
 Luther Teel  
 Ann Thompson



Jessie Turner  
 Dallas Tyson  
 Charles Whitley  
 William Teel





## Freshmen

Pres. --Cathy Cates  
 V. P. --Tyresia Pollard  
 Sec. --Erline Corbitt  
 Treas. --Barbara Hulon  
 Rep. --Dona Little



Judy Adkins  
 Bernice Allen  
 Gerald Baker  
 Brenda Bell  
 Nancy Braxton

Earl Bunting  
 Connie Brown  
 Lindsey Butts  
 L. D. Casper  
 Kathy Cates

Danny Cobb  
 Mary Cobb  
 Micheal H. Cobb  
 Bobby Cogdell  
 Debra Corbitt

Erline Corbitt  
 Gerald Corbitt  
 Dennis Deans  
 Jessie Everette  
 Donnic Eakes

Donald Fleming  
 Patrica Fleming  
 Valorie Fovendel  
 Linda Gaynor  
 Billy Grizzard

Ronnie Hammil  
 Steve Hardee  
 Ann Harrell  
 Carolyn Harris  
 Jimmy Harris

Judy Harris  
 Susan Harris  
 Delphia Heath  
 Lawrence Hedgepeth  
 Barbara Hulon

Clifton Jones  
 Jessie Jones  
 Joan Leggett  
 Dona Little  
 Brenda Moore

Debra Moore  
 Gloria Mozingo  
 Patrecia Murray  
 Connie Newton  
 Marcia Norville

Larry Parker  
 Arthur Peaden  
 Dorothy Peaden  
 Linwood Peaden  
 Eleanor Pierce

Carolyn Pollard  
 Sherry Pollard  
 Tereash Pollard  
 Danny Scott  
 Judy Scott



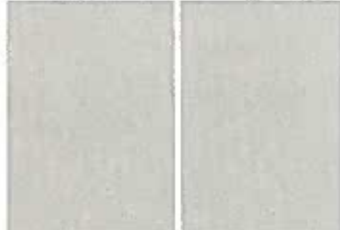
"The end of the day"



Yvonne Scott  
George Simpkins



Ronnie Stepps  
Susan Sprouse



Donnie Taylor  
Linda Teel



Debra Tyson  
Timmy Tyner



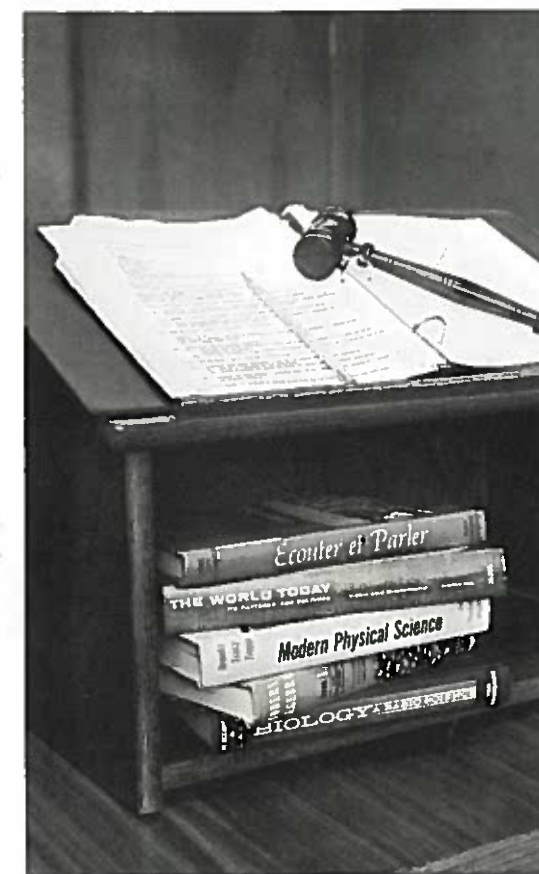
Debra Warren  
Danny Williams



Larry Williams



# ORGANIZATIONS





## Student Council

Pres. -- Charles Meeks  
 V. P. -- Kelley Witherington  
 Treas. -- Billy Kelley  
 Sec. -- Buddy Teel  
 Rep. -- Frances Cates

## Beta Club

Pres. -- Ginger Lewis  
 V. P. -- Jean Morris  
 Treas. -- Beverly Pierce  
 Sec. -- Frances Cates  
 Rep. -- James Bland



## FFA

Pres. -- Ray Parnell, V. P. -- Gene Higson, Sec. --  
 Bucky Moore, Treas. -- Ricky Beaman, Rep. --  
 Jimmy Harris



## FTA

Pres. -- James Tingen,  
 V. P. -- Beverly Pierce,  
 Sec. -- Juanita Simpkins,  
 Treas. -- Diane Everette,  
 Rep. -- Glenda Davis



### *Library Club*

Pres. --Carol Lewis  
 V.P. --Dennis Jones  
 Sec. --Delores Stancill  
 Rep. --Teresa Harrell



### *Bible Club*

Pres. --Brenda Harris  
 V.P. --Frances Cates  
 Sec. & Trea. --Jean Morris  
 Prog. Chair. --Peggy Leggett  
 Rep. --Judy Scott

## *Paper Staff*

Ed. --Norma Stokes  
 Asst. Ed. -- Beverly Pierce  
 Sports Ed. -- James Stancill  
 Humor Ed. -- Edith Harris  
 Religious Ed. -- Lois James  
 Artist -- Ray Parnell  
 Dist. Ed. -- Carolyn Moore



## *FFA*

Pres. --Brenda Harris  
 V. Pres. --Frances Cates  
 Sec. --Delores Stancill  
 Treas. --Jean Morris  
 Rep. --Beverly Pierce

## Monogram Club



President--Ray Parnell; Vice-President--Charles Meeks; Secretary--Jean Morris; Treasurer--Ricky Beaman; Reporter--William Harris

## Marshals



Chief Marshal--Ginger Lewis



## Bus Drivers

Ginger Lewis  
 Billy Kelly  
 Roy Brown  
 James Corbitt  
 Kelly Witherington  
 Charles Meeks  
 Bobby Gaynor  
 William Harris  
 Larry Deans

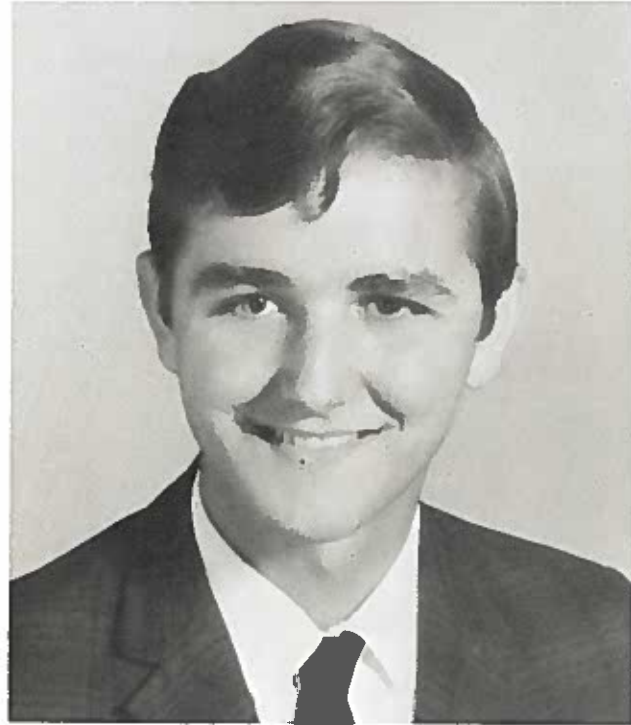
Not Pictured:  
 Ray Parnell  
 Gene Higson

## Glee Club

Pres. --Frances  
 Cates  
 V. Pres. --Judy  
 Scott  
 Sec. --Delores  
 Stancill  
 Treas. --Lois  
 Everette



## Eagle Staff



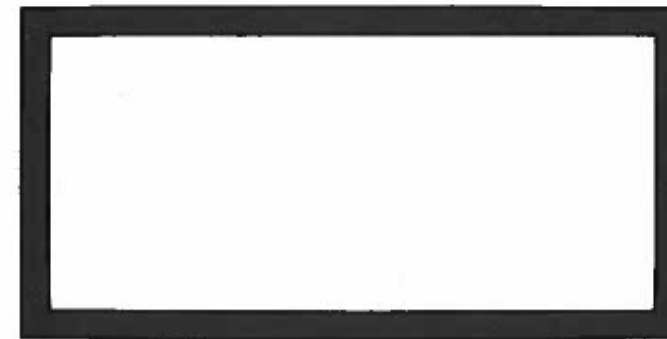
With great pride the 1966-67 Annual Staff presents this edition of the Eagle to you hoping it will remind you of all the great moments spent at Belvoir-Falkland. We had many wonderful and exciting moments here of which we will always cherish. Belvoir-Falkland has given us a glimpse of what the future holds for us. It has prepared us for the world and inspired us for the waiting life. As we leave, we have hopes that it will do as much for the seniors following us. It is sad for us to leave a place we love, but we are eager to meet the outside world. With this volume of the Eagle, we give our appreciation to our parents, our administration, teachers, and our student body.

John Price--Editor



Carolyn Moore, Photographer; James Tinggen, Business Manager; John Price, Editor; Beverly Pierce, Assistant Editor; Marlene Sutton, Typist; Tanya Murray, Assistant Business Manager

## ACTIVITIES



*Oriental Gardens, Presented*

*by the Juniors to the Seniors of 1965-66*



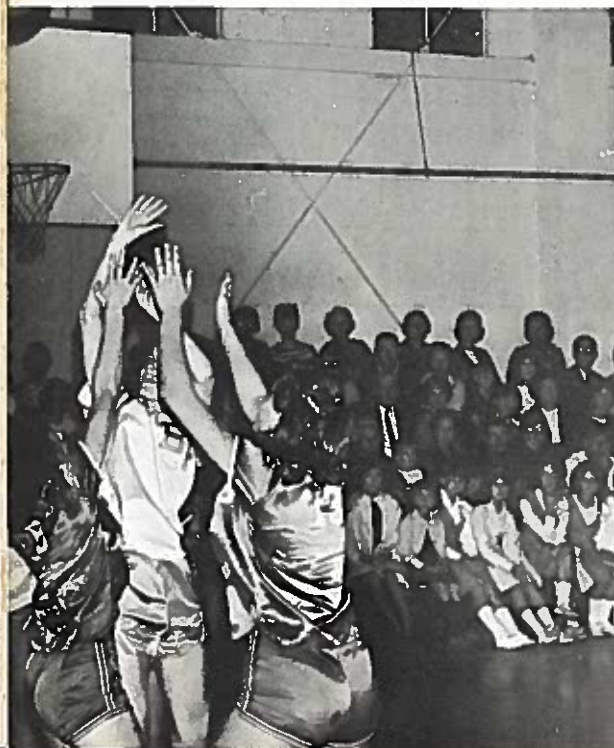


*Homecoming Festivities Highlighted  
Victory Over Oak City: Girls*

*by Crowning of Queen  
33-22 Boys 41-64*



Homecoming Queen--Miss Carolyn Moore



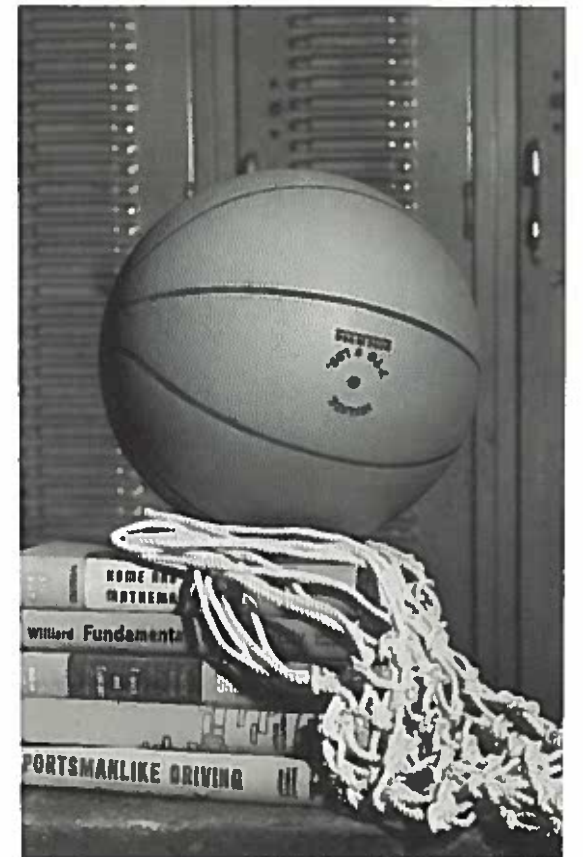
# Cheerleaders



Chief--Frances Cates  
Co-Chief--Connie Hammil



# ATHLETICS



# Varsity Boys

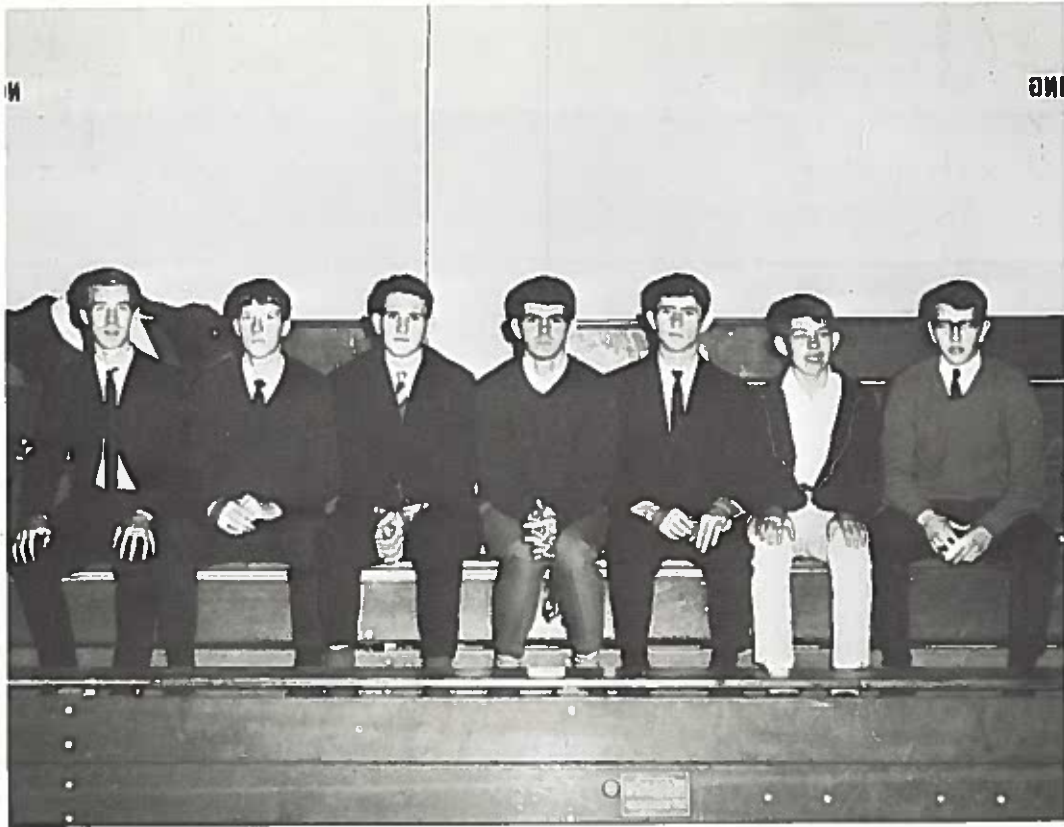
Coach--Mr. Horace Lawrence  
Co-Cap. --Ray Parnell, William Harris



# Girls' Basketball

Coach--Mr. Eugene James  
Co-Cap--Beverly Pierce, Diane Everette





*Baseball Team*

*J. V. Ball Team*

